

Array

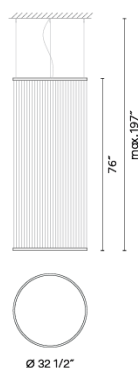
1835

Design By Umut Yamac

The large scale hanging cylindrical silhouette Array lamp wraps around the space rather than dominating it thanks to the spacious spread of the filaments creating a translucence through the volume it occupies.

VIBIA

Spec sheet



Optional: Extra cable length
Min. Quantity, upcharge and extra lead time apply

Finish

- 37 Terra Red
NCS S 4040-Y70R
- 47 Green L1
NCS S 4005-G80Y
- 24 Beige M1
NCS S 2005-Y50R

LED color temperature

2700 K

Dimming

0-10V

Installation type

Surface / Remote Micro

Materials

Upper ring: Aluminum
Bottom ring: Brass
Diffuser: PC- Polycarbonate
Threads: PES FR

Light source

1 x LED STRIP 50W 48V

LED

CRI>90 6050 lm 121
2700 K

Driver

Constant Voltage 100~277 V V
50~60 Hz HZ

Dimmable LED IP20 Multi-volt

UL Dry Location 50-60Hz 0-10V

Application

Pendants

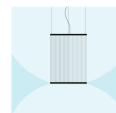
Packaging

1 Box
4.72 m x 36.61 m x 36.61 m
Gross weight 33.04
Net weight 20.93
Vol. 3.6622

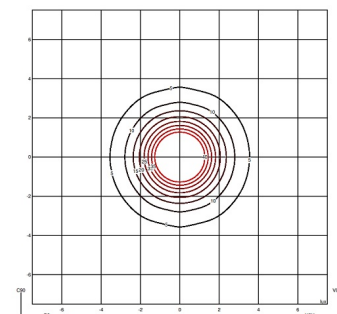
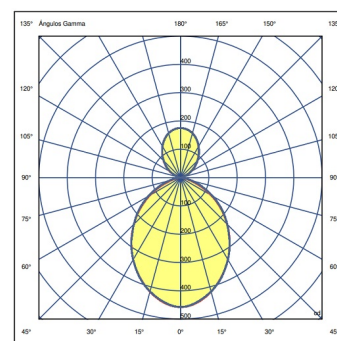
Lighting effect

General lighting

Lamp for general lighting that equally distributes the light in all directions.

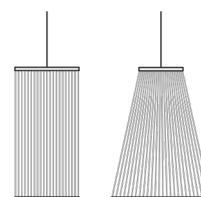


Photometric Data



Efficiency 100%
Coordination System CG
Total Flux 1347
Maximum Value 457.46 cd

Other Applications



VIBIA, INC.

USA & CANADA
272 Fernwood Ave. Edison, NJ 08837. USA
Phone 732 417 1700 sales@vibia.com www.vibia.com/us/usa

HEADQUARTERS
Progrés 4-6. 08850 Gavà
(Barcelona - Spain)